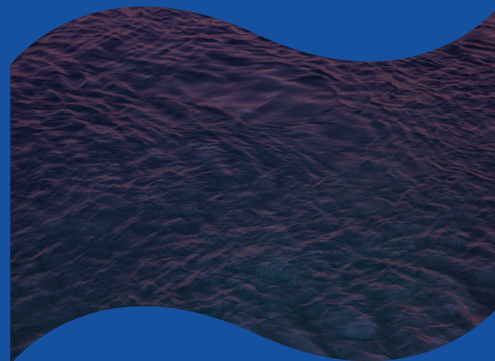


# ≈ FREMANTLE BIENNALE A FESTIVAL OF SITE-RESPONSIVE CONTEMPORARY ART.

CROSSING  
21

5-21  
NOVEMBER



## REDISCOVER WALYALUP WITH THE FREMANTLE BIENNALE. FOR MORE INFORMATION AND TO BOOK TICKETS VISIT [FREMANTLEBIENNALE.COM.AU](http://FREMANTLEBIENNALE.COM.AU)

The Fremantle Biennale takes place on the unceded lands and waters of the Whadjuk people of the Nyoongar nation. We acknowledge the Whadjuk people as the traditional owners of the greater Walyalup (Fremantle) area. We acknowledge elders past, present and emerging, and respect the living culture and heritage of all Aboriginal and Torres Strait Islander peoples.

### FOUNDING PARTNER



### PRINCIPAL PARTNERS



### PRESENTING PARTNERS



The Fremantle Biennale is a festival of site-responsive contemporary art taking place from 5-21 November 2021.

Our largely free program presents artworks by artists from across Australia in a festival that reveals and celebrates the cultural, social and historical distinctiveness of the Fremantle (Walyalup) region.

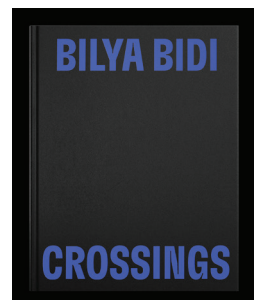
The Fremantle Biennale is held every two years in the Nyoongar season of Kambarang (November).

The third edition of the Fremantle Biennale, with the title CROSSING 21, will trace the shores of the Derbarl Yerrigan (Swan River) from Walyalup (Fremantle) to Dyoondalup (Point Walter) and through to the Derbarl Nara (Coogee Beach), with a focus of activity between the two iconic Fremantle traffic bridges.

This is a place of alchemy where histories intersect and collide, where the bilya (river) meets the wardan (sea) in a place of confluence.

Inspiring the theme for CROSSING 21 is a seminal event that took place over one hundred years ago. At the mouth of the river a sandstone tidal land bridge once existed, which served as a natural crossing, used by the Whadjuk people for safe passage, ritual and ceremonial practices. This rocky bar was blasted away by Chief Engineer C Y O'Connor to make way for the ever-growing Swan River colony in 1892. This event disrupted the harmonious balance and tidal rhythm between ocean, river and people that had existed for millennia.

Responding to this history, CROSSING 21 includes 20 site-responsive artworks by First Nation, West Australian and Australian artists, spanning large-scale installations, dance, contemporary music, live performance, visual art and architecture.



A lasting legacy to the cultural and social impact left by the Fremantle Biennale, the *Bilya Bidi* book is an illustrated monograph that speaks to the theme of CROSSING 21. Contextualising Walyalup's (Fremantle's) deep history and the subsequent layering of colonial and contemporary narratives, the book will hold a collection of essays, reflections, poems and correspondences, illustrated by the works of contemporary artists, writers, community leaders and Whadjuk Noongar Traditional Owners. Order your copy now from our website.





FOR FURTHER INFORMATION ON ALL EVENTS PLEASE REFER TO WWW.FREMANTLEBIENNALE.COM.AU		FRI 5	SAT 6	SUN 7	MON 8	TUE 9	WED 10	THU 11	FRI 12	SAT 13	SUN 14	MON 15	TUE 16	WED 17	THU 18	FRI 19	SAT 20	SUN 21	
1A/1B/1C	MOOMBAKI	8PM FREMANTLE							8PM ATTADALE							8PM COOGEE			
2	THESE WORDS WILL REMAIN	24/7																	
3A/3B/3C	THE COMMONWEALTH OF NEW BAYSWATER																		
3A	DOWNTOWN	THURS-FRI 5-10PM SAT-SUN 2-10PM						THURS-FRI 5-10PM SAT-SUN 2-10PM							THURS-FRI 5-10PM SAT-SUN 2-10PM				
3B	EMBASSY	THURS-FRI 5-10PM SAT-SUN 2-10PM						THURS-FRI 5-10PM SAT-SUN 2-10PM							THURS-FRI 5-10PM SAT-SUN 2-10PM				
3C	THE INVERTED MUSEUM OF HISTORY	10-6PM						10-6PM							10-6PM				
4	OUTSIDE IN	10-4PM	PERFORMANCES 4-6PM					10-4PM							10-4PM		PERFORMANCES 4-6PM		
4	STEP CHANGE	10AM-4PM						10AM-4PM							10AM-4PM				
4	MILLENNIAL REAPER	10AM-4PM						FACTORY OPEN 11-12 NOV, 3-6PM			PUBLIC BROOMCRAFT SESSION 13-14 NOV, 3-6PM				10AM-4PM				
4	FERVOR   CROSSOVERS							7PM											
4	MEETING PLACE															7.30PM			
5A/5B	ORANGE PATH	24/7																	
6A/6B	BULLHORN															6PM			
7	TIGHTNESS TIMES TOUGHNESS	10AM-6PM						10AM-6PM							10AM-6PM				
7	A BLESSED CURSE							6PM											
8	GATHERING PLACE	24/7																	
9	OVERLOAD	24/7																	
10	TRANSITIONS	10AM-6PM						10AM-6PM							10AM-6PM				
11	UNCOUNTABLE														5.30PM & 7PM				
12	SUNRISE SUNSET	5.30AM & 6PM							5.30AM & 6PM							5.30AM & 6PM			
13	VESPERS								6PM										
14	KEPA KALYAKOORL – AQUIFEROUS	10AM-6PM						10AM-6PM							10AM-6PM				
15	ULTRAMARINE CLOSING PARTY																	5PM-LATE	
15	CONVERSATIONS CREATIVE CONCILIATIONS									10AM-1PM									

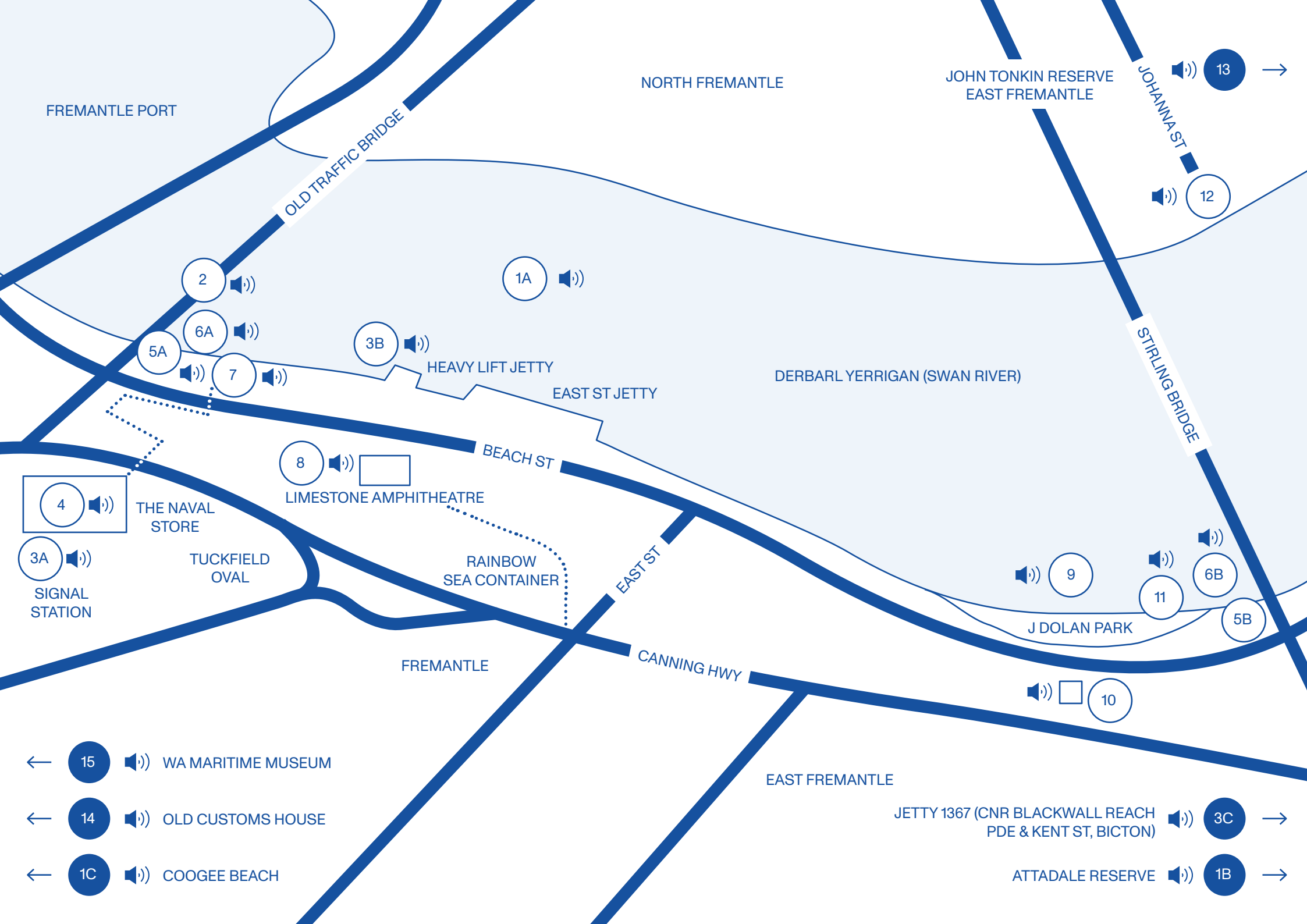


## AUDIO TOUR

A self-guided audio tour and walk, *Bilya Bidi*, will accompany the Fremantle Biennale program. *Bilya Bidi* explores the histories of the bilya (river), acknowledging ancient stories and disruptions and weaving together interviews, reflections and new works from Whadjuk Noongar Traditional Owners, historians and community members, as well as the Fremantle Biennale artists.

Access the audio tour via your mobile device with the QR code or via [www.fremantlebiennale.com.au](http://www.fremantlebiennale.com.au)





FREMANTLE PORT

NORTH FREMANTLE

JOHN TONKIN RESERVE  
EAST FREMANTLE

OLD TRAFFIC BRIDGE

JOHANNA ST

13



12

STIRLING BRIDGE

2



1A



6A



5A



7



3B



HEAVY LIFT JETTY

EAST ST JETTY

DERBARL YERRIGAN (SWAN RIVER)

8



LIMESTONE AMPHITHEATRE

BEACH ST

4



THE NAVAL  
STORE

3A



SIGNAL  
STATION

TUCKFIELD  
OVAL

RAINBOW  
SEA CONTAINER

EAST ST

CANNING HWY

FREMANTLE

EAST FREMANTLE



9



11



6B

5B



10

J DOLAN PARK

JETTY 1367 (CNR BLACKWALL REACH  
PDE & KENT ST, BICTON)



3C



ATTADALE RESERVE



1B



15



WA MARITIME MUSEUM



14



OLD CUSTOMS HOUSE



1C



COOGEE BEACH



MOOMBAKI

Ilona McGuire

1A

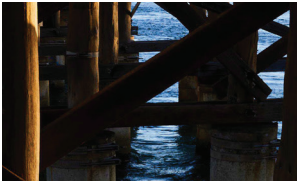
1B

1C

Derbarl Yerrigan (Swan River), between the bridges, Fremantle  
5-7 November  
Fri-Sun-8pm  
FREE

Dyoondalup (Attadale Reserve), Attadale  
12-14 Nov  
Fri-Sun-8pm  
FREE

Derbarl Nara (Coogee Beach), Coogee  
19-20 Nov  
Fri-Sat-8pm  
FREE



THESE WORDS WILL REMAIN

Jazz Money

2

Fremantle Traffic Bridge, Fremantle

5-21 Nov  
24/7  
FREE



THE COMMONWEALTH OF NEW BAYSWATER

Jessee Lee Johns  
Rohin Kickett  
Jacob Diamond

3A

3B

3C

5-21 Nov  
Downtown  
Thurs-Fri,  
5-10pm  
Sat-Sun  
2-10pm

Public Works & Embassy  
Thurs-Fri,  
5-10pm  
Sat-Sun  
2-10pm

The Inverted Museum of History  
Thurs-Sun  
10am-6pm  
FREE



OUTSIDE IN

Amrita Hepi

4

The Naval Store, Fremantle  
5-21 Nov  
Thurs-Sun  
10am-4pm

Performances  
Fri 5 Nov 4-6pm  
Sat 6 Nov 4-6pm  
Sun 7 Nov 4-6pm  
Thurs 18 Nov 4-6pm  
Fri 19 Nov 4-6pm  
Sat 20 Nov 4-6pm  
FREE



STEP CHANGE

Alexander Boynes  
Mandy Martin  
Tristen Parr

4

The Naval Store, Fremantle

5-21 Nov  
Thurs-Sun  
10am-4pm  
FREE



MILLENNIAL REAPER

Loren Kronemyer

4

The Naval Store, Fremantle  
5-21 Nov  
Thurs-Sun  
10am-4pm

Factory Open  
Thurs-Fri, 11-12 Nov  
3-6pm  
FREE

Broomcraft Sessions  
Sat-Sun, 13-14 Nov  
3-6pm  
\$20 + booking fee



FERVOR CROSSOVERS

Paul Iskov  
Dale Tilbrook

4

The Naval Store, Fremantle

Dinners  
Thurs 11 Nov 7pm  
Fri 12 Nov 7pm  
Sat 13 Nov 7pm  
Sun 14 Nov 7pm  
\$250 + booking fee



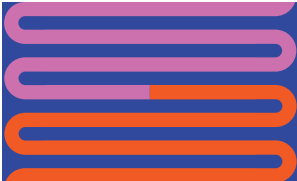
MEETING PLACE

HIP Company

4

The Naval Store, Fremantle

Performances  
Fri 19 Nov 7:30pm  
\$45 + booking fee



ORANGE PATH

AC4CA

5A

5B

Beach Street, Fremantle and Riverside Road, East Fremantle

5-21 Nov  
24/7  
FREE



BULLHORN

Callum G'Froerer  
Clint Bracknell  
Trevor Ryan

6A

6B

Beneath the Fremantle Traffic Bridge, Fremantle

Performances  
Fri 19 Nov 6pm  
Sat 20 Nov 6pm  
FREE



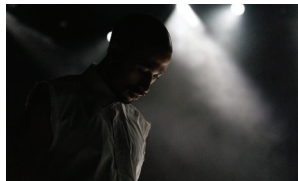
TIGHTNESS TIMES TOUGHNESS

Bruno Booth

7

North Worral Park, Fremantle

5-21 Nov  
Thurs-Sun  
10am-6pm  
FREE



A BLESSED CURSE

Maitland Schnaars  
Brooke Leeder  
Azariah Felton

7

Limestone Amphitheatre, 123 Beach Street, Fremantle

Performances  
Thurs 11 Nov 6pm  
Fri 12 Nov 6pm  
Sat 13 Nov 6pm  
\$40 + booking fee



GATHERING PLACE

Sandra Harben  
Penhale & Winter

8

Limestone Amphitheatre, 123 Beach Street, Fremantle

5-21 Nov  
24/7  
FREE



OVERLOAD

Andrew Sunley Smith

9

Derbarl Yerrigan (Swan River), J Dolan Park, East Fremantle

5-21 Nov  
Thurs-Sun  
10am-6pm  
FREE



TRANSITIONS

Nathan John  
Thompson

10

Plympton Pumphouse, Riverside Road, East Fremantle

5-21 Nov  
Thurs-Sun  
10am-6pm  
FREE



UNCOUNTABLE

May Greenberg  
Zee Zunnur

11

Stirling Bridge, Fremantle

Performances  
Thurs 18 Nov, 5:30pm & 7pm  
Fri 19 Nov, 5:30pm & 7pm  
Sat 20 Nov, 5:30pm & 7pm  
FREE



SUNRISE SUNSET

Katie West

12

North shore of the Derbarl Yerrigan (Swan River), Johannah Street, North Fremantle  
5-21 Nov

Performances  
Fri 5 Nov 5:30am and 6pm  
Fri 12 Nov 5:30am and 6pm  
Fri 19 Nov 5:30am and 6pm  
FREE



VESPERS

Rachael Dease  
Tim Collins

13

John Tonkin Reserve, East Fremantle

Performances  
12 Nov 6pm  
13 Nov 6pm  
14 Nov 6pm  
FREE



KEPA KALYAKOORL – AQUIFEROUS

Cara Teusner-Gartland  
Daniel Jan Martin  
Sandra Harben

14

Old Customs House and various sites along the Derbarl Yerrigan

5-21 Nov  
Thurs-Sun  
10am-6pm  
FREE



ULTRAMARINE CLOSING PARTY

MOVE & LEISURE STATE

15

WA Maritime Museum

Sun 21 Nov  
5pm-late  
\$20 + booking fee  
Booking Essential



CONVERSATIONS CREATIVE CONCILIATIONS

15

Maritime Museum Theatre

13-14 Nov  
Sat-Sun  
10am-1pm  
\$10 + booking fee